

INCLUDES FREE **2006 EVENTS GUIDE** Worth £4.99

Your complete steam and vintage rally yearbook

OLD GLORY

VINTAGE RALLY ON TODAY

**FOWLER ENGINES
FOUND ON SEABED**



**MBE for
Hollowell's
Allen Eaton**

**Steam dredger's
future in doubt**

Howard's ex-Noyce Gallopers restored

■ The villagers with half an engine each!

No 192 February 2006 £3.35



January 20 2006 - February 15 2006

Fowler ploughing engine

A PAIR of Fowler ploughing engines have been found at the bottom of the North Sea off Whilby, North Yorkshire.

The subsequent unfolding mystery as to how they came to be there was sparked when one of the divers involved made an approach at the Drifffield rally to *Old Glory's* Derek Rayner.

Carl Racey, a partner in subseatv (www.subseatv.com) came along with photographs that he'd taken

just the day before of the remains of the engines - and the vessel in which they were being transported.

It has not yet been established what the vessel was, or exactly when it floundered, but it seemingly was equipped with one or more vertical engines and was believed to have been a paddle steamer.

He was interested to learn that Fowler had a branch factory in Magdeburg and it was therefore

possible that the engines were on their way to Germany for onward sale to customers farther east.

Charles Roads of the Steam Plough Club has indicated that he believes them to have been built during the very late Victorian or Edwardian era and they were probably complete with plough and water cart - this latter fact would account for additional large wheels being found which, at the time, Carl

and his diving partner, Andy Jackson, couldn't explain. Having been submerged for probably a century or so, the thin tank would have rusted away, leaving only the main components to be found and puzzle today's adventurers.

At the time of the dive in August, visibility was good and they videoed what they found, although at first they were not quite sure what to make of the jumble of



Some fish inspect a Fowler smokebox.



A wheel makes the perfect framework for marine life.



A wheel in the vicinity that has become separated.



Allen Eaton MBE.

THE chairman of the annual Hollowell Steam Rally & Heavy Horse Show, Allen Eaton, has seen his efforts rewarded with an MBE in the New Year's Honours List.



Andrew Scott, head of the National Railway Museum at York, receives a CBE.

New Year's honour for Hollowell's

It is just reward for an organisation that has raised a total of £700,000 for local charities and good causes over the past 19 steam rallies.

The delighted former rail worker told *Old Glory*: "I'm only the figurehead. This award is on behalf of all the people of Hollowell, the rally helpers and the steam fraternity who do all the wonderful work.

"Twenty years ago we ran a rally to raise some money for the village church roof and in 2005 we gave a

total of £75,600 to 91 different organisations - that's the measure of how we've grown."

"It's an on-going thing which benefits the whole of Northamptonshire because everything is given away locally to the community."

On Christmas morning, Allen dressed up as Father Christmas and used an engine to pull a sleigh around the village, delivering parcels to youngsters. He raised a total of £287 for the Northamptonshire and Warwickshire Air Ambulance.

He has also been a member of Hollowell Parish Council for 20 years and is the president of the Parkinson's Disease Society in Wellingborough.

Rally secretary Jacquie Rycraft said: "Allen so richly deserves this recognition. He's an exceedingly hard-working, charismatic and all-round good guy!"

■ Other honours in the heritage sector include Andrew Scott (left), head of the National Railway Museum at York, who has been awarded a CBE for services to

museums. He said: "I'm honoured and delighted to receive this award, which must surely reflect the host of achievements that the NRM has made over the last few years. If that's the case, then it's an accolade that I'm accepting on behalf of the team here at the museum. It has been a great privilege to work with my colleagues at York and elsewhere in the National Museum of Science & Industry to help ensure the museum's success."

And it's an OBE for the man who was originally responsible for preserving the world-famous *Flying Scotsman* steam locomotive.

Alan Pegler, then a Doncaster businessman, bought LNER Pacific *Flying Scotsman* when it was withdrawn from main line service over 40 years ago. Today Mr Pegler is president of the Ffestiniog Railway, a line he had saved in 1955.

Paul Wagstaffe, vice-president of the Inland Waterways Association, was awarded an MBE for services to inland waterways. Mr Wagstaffe, 61, has served on numerous waterway bodies, including The British Marine Federation, and has focused his

s discovered on seabed

wheels and boilers in the rotted wreck of the steamship.

Mr Racey said the engines appeared to have been carried on deck and had rolled over as the ship sank to lie on the seabed with some of the wreckage strewn around them. However, when they spoke to steamship expert Charles Wayne, he said it was a very early steam ship with a very simple engine and could not have been

going to Magdeburg, as it couldn't have carried enough coal.

This is an exciting find but the chances of the engines ever being rescued is remote since the huge cost of salvage in a depth of 65 metres and 20 miles offshore would be enormous.

The Steam Plough Club's Fowler registers have been consulted and no specific record has been found relating to Fowler engines being lost

at sea, so any help from that direction has not yet been possible. However, the late Alf Pepper, who worked for Fowler for many years, in his diaries recalled a boat being sunk in the North Sea on the way to Hamburg around the approximate time it is thought the ship went down.

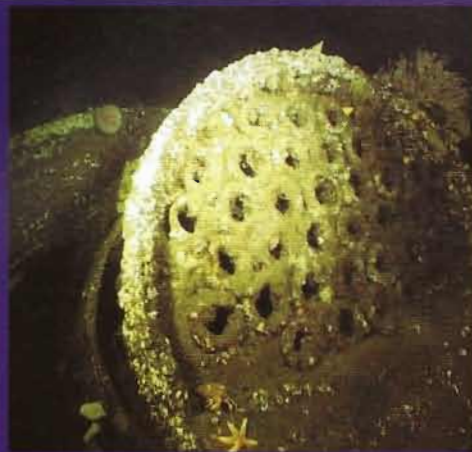
When the weather improves, Carl and Andy plan to return to the wreck site, and further exploration might

reveal brassware with the appropriate works numbers – or the ship's bell with its name, so that further identification might be possible.

Mr Racey said: "It's a fascinating story and we'd love to get to the bottom of it. This may just jog someone's memory to get us on the right trail. "Without a name or a date, getting more information is like finding a needle in a haystack." *Photography: Andy Jackson*



The engine provides a perfect hide-out for a lobster.



Boiler tubeplate, plus crab and starfish!



A jumble of wheels.

Allen Eaton

efforts on opening up long-abandoned waterways to the public.

OBEs have also been awarded to Alan Bates, chairman of the Volunteer Service at the Historic Dockyard at Chatham, and to Christopher Austin, chairman of the preserved West Somerset Railway.



The unmistakable figure of railway preservation pioneer Alan Pegler, the man who first saved Flying Scotsman when it was withdrawn by British Railways.

Teddy Boston's Cadeby estate for sale at £495,000

THE late Rev Teddy Boston's Cadeby Rectory, home to the Cadeby Light Railway, is on the market at a guide price of £495,000.

The Leicestershire rectory, which is currently home to Foster traction engine No 14593 of 1927 *Fiery Elias* and Aveling roller No 5163 of 1903 *Thistledown*, boasts a 2ft railway and also a model railway based on the GWR's Dart Valley area of Devon in 1935.

Teddy's widow, Audrey, hopes that the estate can be sold to an enthusiast who will wish to keep the model railway, the result of 40 years' work. She told *Old Glory*: "My late husband did much for the railway movement during his ministry of 40 years. I wish to preserve as much of Cadeby as possible and hope to reach agreement with prospective purchasers to allow access for the model railway team to carry on maintaining and using it. The

narrow gauge line is around the perimeter of the garden. It is a sad time for all but it is to be hoped that it could be preserved in some form in deference to the work by many people who have given enjoyment to young and old alike."

The larger-than-life rector featured as 'the fat clergyman' in the *Thomas the Tank Engine* books, written by family friend the Rev W Awdry.

The estate sale is being managed by County Properties of Hinckley, Tel 01455 890898.



The 2ft railway and station in the grounds of Cadeby Rectory.